

LeafWise MENTORSHIP PROGRAM

“ Growing Wisdom Leaf by Leaf ”

- ✓ One-on-One Mentorship
- ✓ Customized Study Plans
- ✓ Performance Management
- ✓ Digital Performance Tracking



www.beleafias.in



contact@beleafias.in

OUR VISION

Accountability is the cornerstone of our program, driving **motivation**, creating **healthy pressure**, and ensuring a structured approach to success.

Accountability Fuels Motivation



- ✓ **Personalized Guidance:** Regular mentor check-ins keep you focused.
- ✓ **Constructive Feedback:** Encourages growth and improvement.
- ✓ **Celebrate Milestones:** Small wins = big motivation!

Structure Brings Clarity



- ✓ **Tailored Plans:** Aligned to your pace and goals.
- ✓ **Regular Reviews:** Stay on track with weekly plan adjustments.
- ✓ **Integrated Prep:** Holistic focus on Prelims, Mains & Interview.

Healthy Pressure for Performance



- ✓ **Deadlines:** Weekly targets prevent procrastination.
- ✓ **Positive Competition:** Study groups inspire your best.
- ✓ **Managed Workload:** Bite-sized goals avoid overwhelm.

Collaborative Learning



- ✓ **Shared Responsibility:** Study groups boost accountability.
- ✓ **Mutual Support:** Overcome challenges together.
- ✓ **Fresh Insights:** Learn through diverse ideas and perspectives.

KEY FEATURES



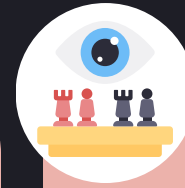
Personalized One-on-One Mentorship

- ✓ Paired with an experienced mentor for **tailored** guidance.
- ✓ **Weekly interactions** to address doubts, track progress, and boost motivation.



Customized Study Plans

- ✓ **Schedules designed** around your strengths, weaknesses, and availability.
- ✓ **Flexibility** to adapt plans as you progress and syllabus evolves.



Strategic Visioning

- ✓ **Clear milestones** for steady progress.
- ✓ **Regular goal tracking** with actionable feedback.



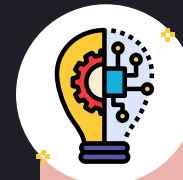
Holistic Development

- ✓ **Academic Plus approach** – life coaching and resilience building.
- ✓ **Special Sessions** on stress management, time utilization, and productivity.



Collaborative Study Environment

- ✓ Small **study groups** for peer learning and shared growth.
- ✓ **Group discussions** and projects for deeper understanding.



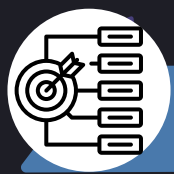
Cutting-Edge Technology Integration

- ✓ Digital performance **tracking and analytics**.
- ✓ Access to **interactive History Timeline**



Continuous Support and Monitoring

- ✓ Weekly **performance reviews** to keep you on track.
- ✓ **Immediate doubt resolution** and guidance.



OBJECTIVE

- ✓ Everyone deserves a mentor; we ensure no one is left behind.
- ✓ No "Delhi vale bhaiya" to guide you? We've got you covered.
- ✓ Affordable mentorship at pocket friendly price.
- ✓ Help aspirants make better, informed decisions.
- ✓ Foster accountability with structured plans and reviews.
- ✓ Simplify preparation with clear goals and actionable steps.



WHO CAN JOIN ?

- ✓ Struggling with Consistency
- ✓ Need Personalized Guidance
- ✓ Facing Decision Fatigue or Battling Procrastination
- ✓ Lacking Accountability
- ✓ You can join at any stage of preparation as this program is tailored as per your needs.



IT STARTS
WITH YOU

*Lost in the crowd? Stand out
with a mentor by your side.*

WHY CHOOSE US?

Feature	LeafWise Mentorship Program	Other Programs
Personalized Guidance	Each aspirant is paired with a dedicated mentor for one-on-one tailored guidance , ensuring focused progress.	Group sessions, less individual attention.
Study Plans	Customized study plans based on individual strengths, weaknesses, and personal goals, with flexibility to adjust.	Fixed study schedules that may not consider individual preferences or specific needs.
Accountability	Weekly check-ins (responsibility of mentor) with mentors and peer-driven accountability through study groups.	Limited follow-up (responsibility of student) on progress, with no structured peer accountability system.
Holistic Development	Focus on both academic excellence and the development of soft skills (through special sessions) like group discussion, stress management, and work-life balance.	Primarily focused on academics, with minimal emphasis on personal development.
Technology Integration	Use of cutting-edge technology for tracking performance (exclusive) , digital resources, and interactive learning tools.	Traditional methods, limited integration of modern tools or digital resources.
Structured Support	Regular performance reviews, continuous feedback, and immediate assistance during critical stages of preparation.	Infrequent evaluations, with minimal personalized feedback or timely support.
Collaborative Environment	Active small study groups(with mentor) that encourage peer learning, mutual support, and shared growth.	Minimal interaction among peers, mainly isolated learning.

JOIN US TODAY !

SILVER

~~₹299~~ **₹99** **66 %**
OFF

1 Personalized Call with Mentor

- ✓ One-on-One Mentorship
- ✓ Personalized Mentorship Call
- ✓ Direct access to a Mentor
- ✓ Customized 7-Day Action Plan
- ✓ Personalized Feedback
- ✗ Access to History Timeline
- ✗ Digital Progress Tracker
- ✗ Collaborative Study Group
- ✗ Priority Support

GOLD

~~₹1199~~ **₹999** **20 %**
OFF

Monthly Plan (4+ Calls)

- ✓ One-on-One Mentorship
- ✓ Personalized Mentorship Call
- ✓ Direct access to a Mentor
- ✓ Customized Weekly Action Plan
- ✓ Personalized Feedback
- ✓ Access to History Timeline
- ✓ Digital Progress Tracker
- ✗ Collaborative Study Group
- ✓ Priority Support

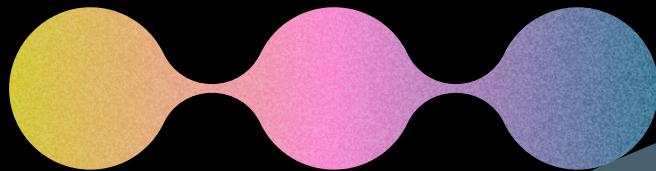
DIAMOND

~~₹14999~~ **₹9999** **34 %**
OFF

Yearly Plan (Weekly Call)

- ✓ One-on-One Mentorship
- ✓ Weekly Personalized Mentorship Call
- ✓ Direct access to a Mentor
- ✓ Customized Weekly Action Plan
- ✓ Personalized Feedback
- ✓ Access to History Timeline
- ✓ Digital Progress Tracker
- ✓ Collaborative Study Group
- ✓ Priority Support

ENROLL NOW



www.beleafias.in



contact@beleafias.in



+91-6006987348



BeLeaf IAS

"Growing Wisdom, Leaf by Leaf"